

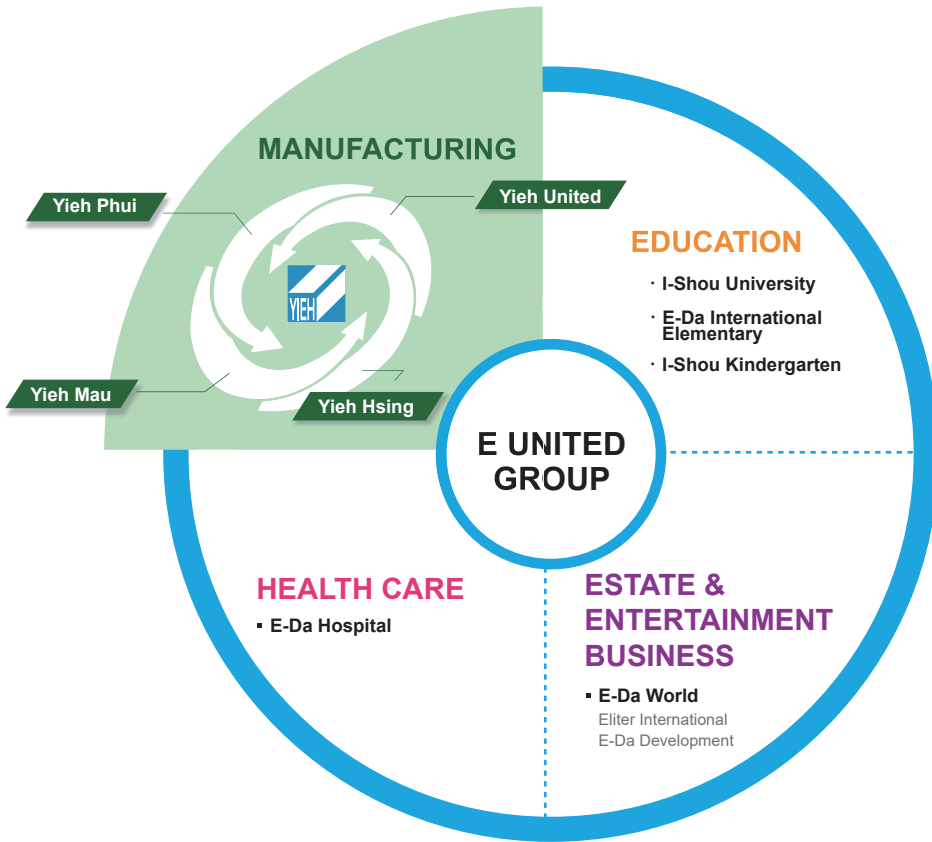
ALUMINUM EXTRUDED PROFILE PRODUCT



**Tube & Pipe | Round Bar & Billet | Flat, Square & Angle Bar
Channel | Architectural & Industrial Profile**



YIEH CORP.
YIEH 實業國際股份有限公司



ABOUT YIEH CORP.

Yieh Corp. belongs to E United Group, which is the largest private metal making group in Taiwan, accumulated more than 40 years of experience in metal industry.

As one of most important sales outlet of E United Group, Yieh Corp. successfully integrates internal and external metal resource in Taiwan and Chinese mainland to provide total solution for client's various needs.

➤ VISION

To be a leading international metal enterprise by creating diversified products, attracting elite people, and maximizing our strength.

We will continue to create the best values for the clients with the specialized team, the most professional channel, information technology, management, and exceptional customer service.

➤ 3 CORE VALUES

Yieh Corp. strives to deliver unparalleled value and cutting-edge solutions to our clients. We are guided and motivated by the following 3 core values.

Professional

Our specialized team is dedicated to high quality of our services and excellence in our work. Yieh Corp. prides itself on the professional relationship we develop with all clients.

Reliable

We are reliable because we know the market, we are honest, truthful and we will meet our promise to our clients. Our clients' success becomes our success. We provide our clients with the best value products in an effort to grow their reputation within their industry.

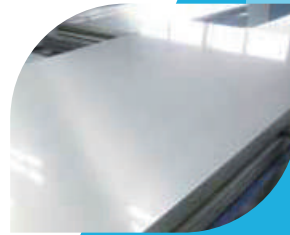
Efficient

We are committed to delivering a total solution of metal products, metal processing, logistics and technical services to fulfill our client's requirements in the most efficient and cost effective manner.

This valuable metal possesses the whiteness of silver, the indestructibility of gold, the tenacity of iron, the fusibility of copper, the lightness of glass.

It is easily wrought, is very widely distributed, forming the base of most rocks, is three times lighter than iron, and seems to have been created for express purpose of furnishing us with the material for our projectile.

- Jules Vernes, "From the Earth to the Moon", 1865



ADVANTAGES

LONG-LASTING

STRONG

BEAUTIFUL

LIGHT

ABUNDANT



EASY FORMING

VERY DUCTILE

COST SAVING

ODORLESS & HARMLESS

EXCELLENT HEAT CONDUCTOR

HIGHLY CORROSION RESISTANT

EXCELLENT ELECTRICAL CONDUCTOR

GOOD REFLECTIVE PROPERTIES

INFINITELY RECYCLABLE

ENERGY CONSERVATION

➤ STANDARD SPECIFICATION

The products from Yieh will be strictly produced according to national or international standard, or sometimes to mutually agreed standard.

CHINESE STANDARD

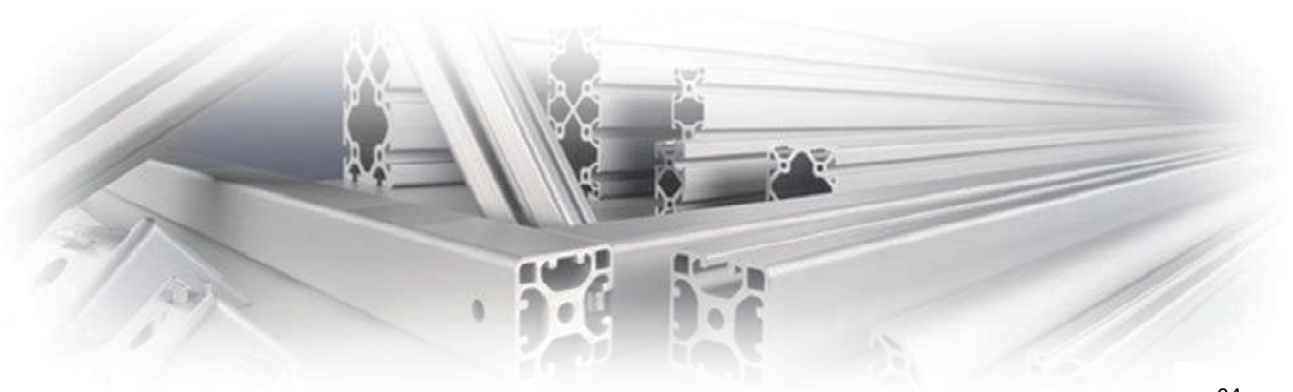
- GB/T 5237 Aluminum Alloy Extruded Profiles for Architecture
- GB/T 6892 Wrought Aluminum and Aluminum Alloys Extruded Profiles for General Engineering
- GB/T 6893 Aluminum and Aluminum Alloys Cold Drawn (Rolled) Seamless Tubes

EUROPEAN STANDARD

- EN 754 Aluminum and Aluminum Alloys Cold Drawn Rod, Bar and Tube
- EN 755 Aluminum and Aluminum Alloys Extruded Rod, Bar, Tube and Profiles
- EN 12020 Aluminum and Aluminum Alloys Extruded Precision Profiles in Alloys EN AW-6060 and EN AW-6063

AMERICAN STANDARD

- ASTM B221 Aluminum and Aluminum-Alloy Extruded Bars, Rods, Wire, Profiles, and Tubes
- ANSI 35.1 Alloy and Temper Designation Systems for Aluminum
- ANSI 35.2 Dimensional Tolerances for Aluminum Mill Products



➤ ALLOY DESIGNATIONS

Comparison of Alloy Designations for Profiles

ALLOY SERIES	CHINESE STANDARD	AMERICAN STANDARD	EUROPEAN STANDARD
2xxx Series	-	-	EN AW -2007
	-	-	EN AW -2011
	2024	2024	EN AW -2024
5xxx Series	5754	-	EN AW -5754
	5083	5083	EN AW -5083
6xxx Series	6005	6005	-
	6060	6060	EN AW -6060
	6061	6061	EN AW -6061
	6063	6063	EN AW -6063
	6082	6082	EN AW -6082
	6463	6463	-

➤ CHEMICAL COMPOSITION

Chemical Composition conforms to Chinese, American and European standard specification

Alloy	Si	Fe	Cu	Mn	Mg	Cr	Zn	Ti	Others		Al
									Each	Total	Min.
2007 ^A	0.8	0.8	3.3-4.6	0.5-1.0	0.4-1.8	0.10	0.8	0.20	0.10	0.30	remainder
2011 ^B	0.40	0.7	5.0-6.0				0.30		0.05	0.15	remainder
2024	0.50	0.50	3.8~4.9	0.3~0.9	1.2~1.8	0.10	0.25	0.15	0.05	0.15	remainder
5754	0.40	0.40	0.10	0.50	2.6~3.6	0.30	0.20	0.15	0.05	0.15	remainder
5083	0.40	0.40	0.10	0.4~1.0	4.0~4.9	0.05~0.25	0.25	0.15	0.05	0.15	remainder
6060	0.30-0.6	0.10-0.3	0.10	0.10	0.35-0.6	0.5	0.15	0.10	0.05	0.15	remainder
6061	0.40~0.8	0.70	0.15~0.4	0.15	0.8~1.2	0.04~0.35	0.25	0.15	0.05	0.15	remainder
6063	0.20-0.6	0.35	0.10	0.10	0.45-0.9	0.10	0.10	0.10	0.05	0.15	remainder
6082	0.70~1.3	0.50	0.10	0.4~1.0	0.6~1.2	0.25	0.20	0.10	0.05	0.15	remainder
6463	0.20-0.6	0.15	0.20	0.05	0.45-0.9		0.05		0.05	0.15	remainder

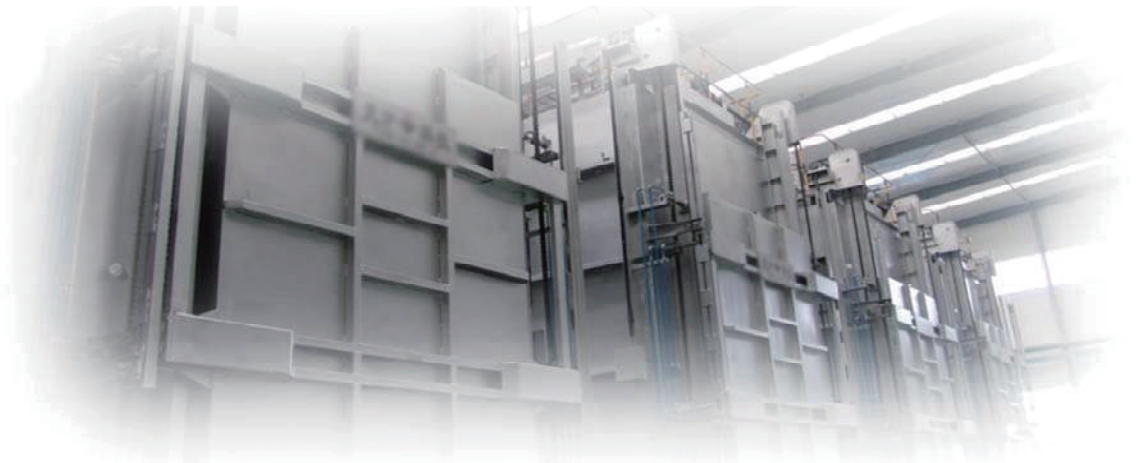
*Note: Limits are in mass percent maximum unless shown as a range or sated otherwise

A: 2007 contents 0.20 Ni, 0.20 Bi, 0.8-1.5 Pb, 0.2 Sn

B: 2011 contents 0.20-0.6 Bi, 0.20-0.6 Pb

➤ ALLOY DESIGNATIONS

TEMPER	DEFINITION
O	Annealed
H112	Slightly strain harden from working at an elevated temperature or from limited amount of cold work
T3	Solution heat-treated, cold worked and naturally aged
T3511	Solution heat-treated, stress-relieved by stretching a controlled amount (permanent set 1% to 3% for extruded rod, bar, shapes and tube, 0.5% to 3% for drawn tube) and naturally aged.
T4	Solution heat-treated and naturally aged
T5	Cooled from an elevated temperature shaping process and then artificially aged
T6	Solution heat-treated and then artificially aged
T651	Solution heat-treated, stress-relieved by stretching a controlled amount (permanent set 1% to 3% for rolled or cold-finished rod and bar) and then artificially aged. The products receive no further straightening after stretching
T66	Solution heat-treated and then artificially aged-mechanical property level higher than T6 achieved through special control of the process 6000 series alloys
T6511	Solution heated-treated, stress-relieved by stretching a controlled amount (permanent set 1% to 3% for extruded rod, bar, shapes and tube, 0.5% to 3% for drawn tube) and then artificially aged. Minor straightening is allowed after stretching to comply with standard tolerances



ALUMINUM ALLOY STANDARD PROFILE TUBE & PIPE

STANDARD SPECIFICATION:

GB/T 6892, GB/T 6893, ASTM B221, EN 754, EN 755

ALLOY AND TEMPER:

Alloy	Temper
5xxx: 5052, 5083, 5754	O, H14, H112
6xxx: 6005, 6060, 6061, 6063, 6082, 6463	T4, T5, T6, T66, T651, T6511

▶ AVAILABLE SIZE RANGE

Dimension	Range
Outside Diameter:	8.0~350mm for Round 15x15mm~250x250mm for Square 10x20mm~200x250mm for Rectangle
Wall Thickness:	1.0~40mm
Length:	1,000~6,000mm



▶ PRODUCTION PROCESS

Extruded, Cold Drawn



▶ FORM

Round, Square, Rectangle

▶ SURFACE FINISH

Mill Finish, unless otherwise specified

▶ SURFACE PROTECTION

Paper interleaved



ALUMINUM ALLOY STANDARD PROFILE ROUND BAR & BILLET

STANDARD SPECIFICATION:

GB/T 6892, ASTM B221, EN 754, EN 755

ALLOY AND TEMPER:

Alloy	Temper
2xxx: 2007, 2011, 2024	O, T3, T4, T3511
5xxx: 5083	O, H112
6xxx: 6005, 6060, 6061, 6063, 6082, 6463	O, H112, T5, T6, T66, T6511

**Alloy can be customized for billet*

▶ AVAILABLE SIZE RANGE

Dimension	Range
Diameter:	6.0~350mm for Bar 101.6~406.4mm for Billet
Length:	1,000~6,000mm for Bar 500~5,800mm for Billet



▶ PRODUCTION PROCESS

Extruded, Cold Drawn



▶ FORM

Round

▶ SURFACE FINISH

Mill Finish, unless otherwise specified



▶ SURFACE PROTECTION

Paper interleaved for bar

Naked for billet

ALUMINUM ALLOY STANDARD PROFILE FLAT BAR & SQUARE BAR

STANDARD SPECIFICATION:

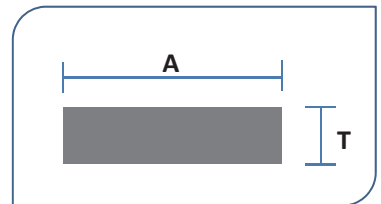
GB/T 6892, ASTM B221, EN 754, EN 755

ALLOY AND TEMPER:

Alloy	Temper
2xxx: 2024	T3511
5xxx: 5083, 5754	O, H112
6xxx: 6005, 6060, 6061, 6063, 6082	T5, T6, T66, T651, T6511

▶ AVAILABLE SIZE RANGE

Dimension	Range
A:	18.0~152.4mm
T:	2.0~152.4mm
Length:	1,000~6,000mm



▶ PRODUCTION PROCESS

Extruded, Cold Drawn

▶ FORM

Flat (rectangle), Square

▶ SURFACE FINISH

Mill Finish, unless otherwise specified

▶ SURFACE PROTECTION

Paper interleaved



ALUMINUM ALLOY STANDARD PROFILE ANGLE BAR

STANDARD SPECIFICATION:

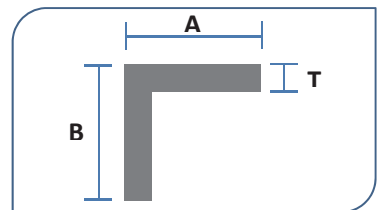
GB/T 6892, ASTM B221, EN 754, EN 755

ALLOY AND TEMPER:

Alloy	Temper
5xxx: 5083	O, H112
6xxx: 6005, 6060, 6061, 6063, 6082, 6463	T5, T6, T66, T6511

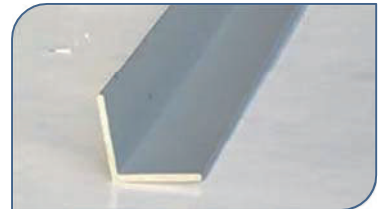
▶ AVAILABLE SIZE RANGE

Dimension	Range
A:	10.0~200mm
B:	10.0~200mm
T:	1.0~15.0mm
Length:	1,000~6,000mm



▶ PRODUCTION PROCESS

Extruded



▶ FORM

Equal Angle, Unequal Angle

▶ SURFACE FINISH

Mill Finish, unless otherwise specified

▶ SURFACE PROTECTION

Paper interleaved



ALUMINUM ALLOY STANDARD PROFILE CHANNEL

STANDARD SPECIFICATION:

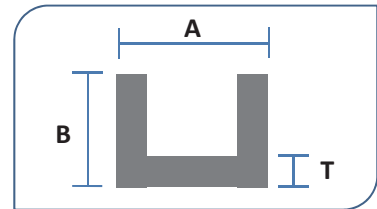
GB/T 6892, ASTM B221, EN 754, EN 755

ALLOY AND TEMPER:

Alloy	Temper
5xxx: 5083	O, H112
6xxx: 6005, 6060, 6061, 6063, 6082, 6463	T5, T6, T66, T6511

▶ AVAILABLE SIZE RANGE

Dimension	Range
A:	10.0~200mm
B:	10.0~300mm
T:	1.0~15.0mm
Length:	1,000~6,000mm

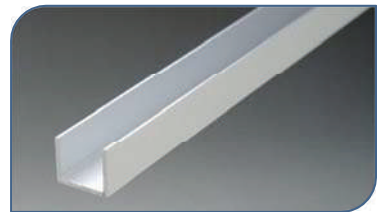


▶ PRODUCTION PROCESS

Extruded

▶ FORM

Equal Angle, Unequal Angle



▶ SURFACE FINISH

Mill Finish, unless otherwise specified

▶ SURFACE PROTECTION

Paper interleaved



ALUMINUM ALLOY ARCHITECTURAL PROFILE

STANDARD SPECIFICATION:

GB/T 5237

ASTM B221 and EN 755 as reference

ALLOY AND TEMPER:

Alloy	Temper
6xxx: 6005, 6060, 6061, 6063, 6463	T4, T5, T6

▶ AVAILABLE SIZE RANGE

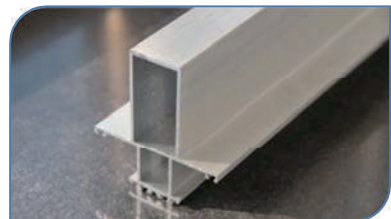
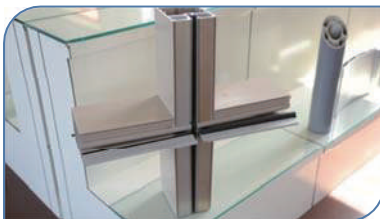
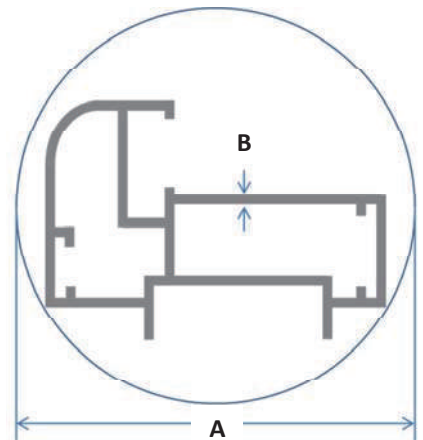
Dimension	Range
Circumscribing Circle (A):	20~350mm
Wall Thickness (B):	>1.0 mm
Length:	1,000~6,000mm

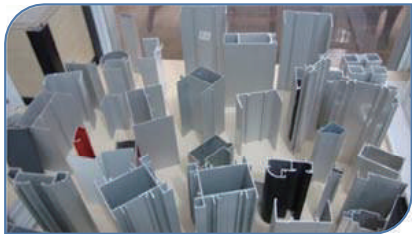
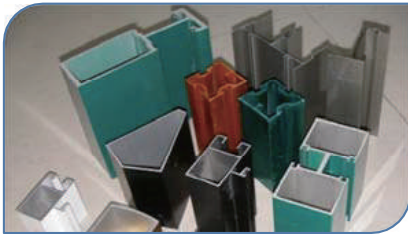
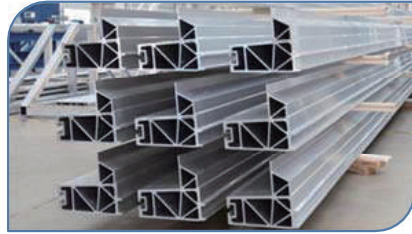
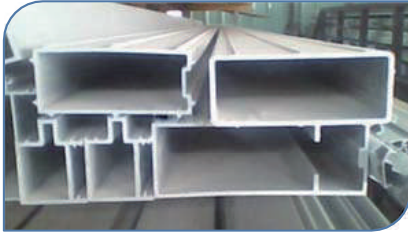
▶ PRODUCTION PROCESS

Extruded

▶ FORM & IMAGE

Standard Form, or as per confirmed drawings





▶ SURFACE FINISH

Mill Finish as default

Anodized

Electrophoretic Coating

Powder Coating

PVDF Coating

Paint, Film Thickness, Color
to be clarified when ordering

▶ SURFACE PROTECTION

PVC film, Plastics bag packaging, Paper interleaved

ALUMINUM ALLOY INDUSTRIAL PROFILE

STANDARD SPECIFICATION:

GB/T 6892, ASTM B221, EN 755

ALLOY AND TEMPER:

Alloy	Temper
5xxx: 5052	H112
6xxx: 6005, 6060, 6061, 6063, 6463	T4, T5, T6

▶ AVAILABLE SIZE RANGE

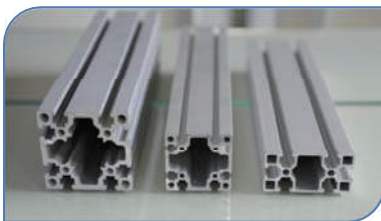
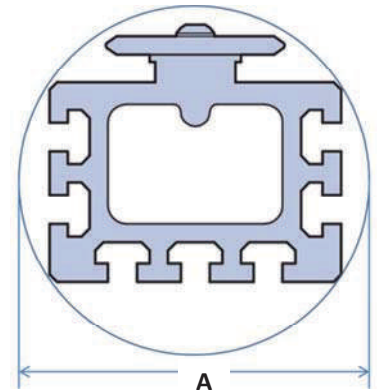
Dimension	Range
Circumscribing Circle (A):	<400mm
Length:	1,000~6,000mm

▶ PRODUCTION PROCESS

Extruded

▶ FORM & IMAGE

Standard Form, or as per confirmed drawings



ALUMINUM ALLOY CUSTOMIZED PROFILE

STANDARD SPECIFICATION:

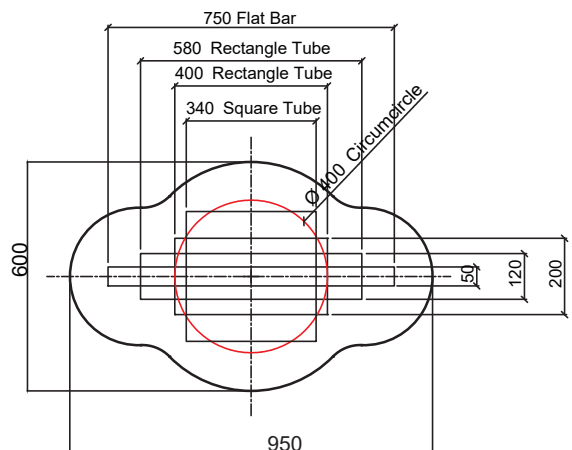
By agreement and by confirmed drawings
GB/T 6892, ASTM B221 and EN 755 as reference

ALLOY AND TEMPER:

Alloy	Temper
6xxx: 6005, 6060, 6061, 6063, 6463	T4, T5, T6

▶ AVAILABLE SIZE RANGE

<u>Dimension</u>	<u>Range</u>
Circumscribing Circle: (theoretical)	<400mm
Length:	1,000~6,000mm



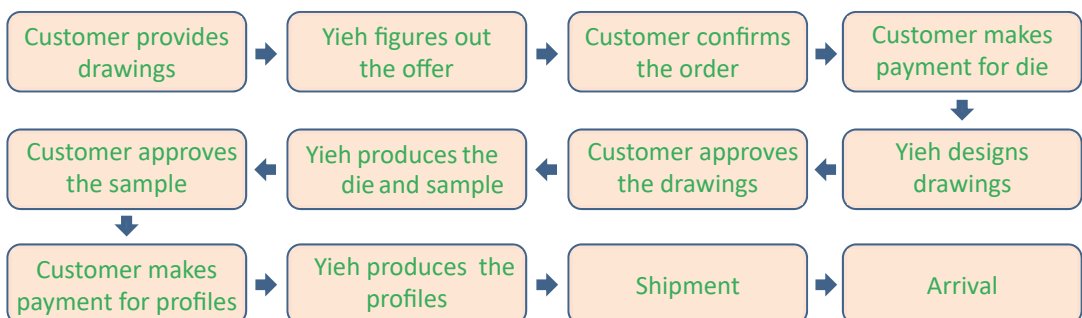
▶ PRODUCTION PROCESS

Extruded

▶ FORM

Customized

▶ ORDERING PROCEDURE



Note: The cost of die will be refunded as long as the order quantity reaches required volume.

APPLICATION

Aluminum & its alloy are used in more than 90% of the industries in the world, especially in transportation, construction, building, appliances and equipment.



TRANSPORTATION

Aircraft & Aerospace
Automobile, Bus, Truck, Tank
Train, Metro Line, Bicycle
Ship, Boat, Yacht



BUILDING & CONSTRUCTION

Roofing, Decoration
Celling, Door, Window
Framework
Structure



ELECTRONICS & APPLIANCES

Computer, Laptop
Communication Tools
Consumer Electric
Heat Exchanger



MACHINE & EQUIPMENT

Catering Equipment
Textile Machinery
Precision Instrument
Medical Equipment



OTHERS

Furniture, Hardware
Accessories
Sports Goods
Medical Supplies

ISO CERTIFICATION

- ✓ Reliable Quality Control
- ✓ Professional Services
- ✓ Efficient Order Management



RoHS CERTIFICATION

- ✓ Standardize materials and technical standard
- ✓ Conducive to human health and environmental protection



CE CERTIFICATION

- ✓ An Important Passport to European Market
- ✓ Environmental Material Assurance



ORDERING INFORMATION

➤ Required Information in firm enquiry

<u>Item</u>	<u>Information</u>	<u>Example</u>
1. Product Name*	Aluminum Tube, Angle, Channel	Aluminum Round Tube
2. Standard Specification*	GB/T 6892, ASTM B221, EN 755	EN 755
3. Alloy*	Alloy Designations	6060
4. Temper*	Temper Designations	T66
5. Dimension*	Thickness, Length	50 x 2.0 x 6000mm
6. Order Quantity*	Specific Quantity per each size	20MT
7. Surface Finish (if any)	Mill Finish Coating (paint, color, thickness)	Mill Finish
8. Surface Protection (if any)	Paper interleaved, Plastic bags packing	Paper Interleaved
9. Application	Car, Ship, Train, Construction	General engineering
10. Other Requirements (if any)	Chemical Composition, Mechanical Properties, Dimensional Tolerance	Thickness tolerance on light side

- ✓ *The items with red star are required to be clarified for any enquiry.*
- ✓ *Other specifications unlisted in our catalogue are available up to request, or will be provided by agreement.*

➤ Minimum Order Quantity (MOQ)

2MT per size, total 20MT for one shipment

**Note: The order with quantity less than MOQ may be acceptable on condition of that other clients order same specifications at the time of ordering*



PROFESSIONAL
RELIABLE
EFFICIENT

- ▶ www.yieh.com
- ▶ www.aluminum.yieh.com